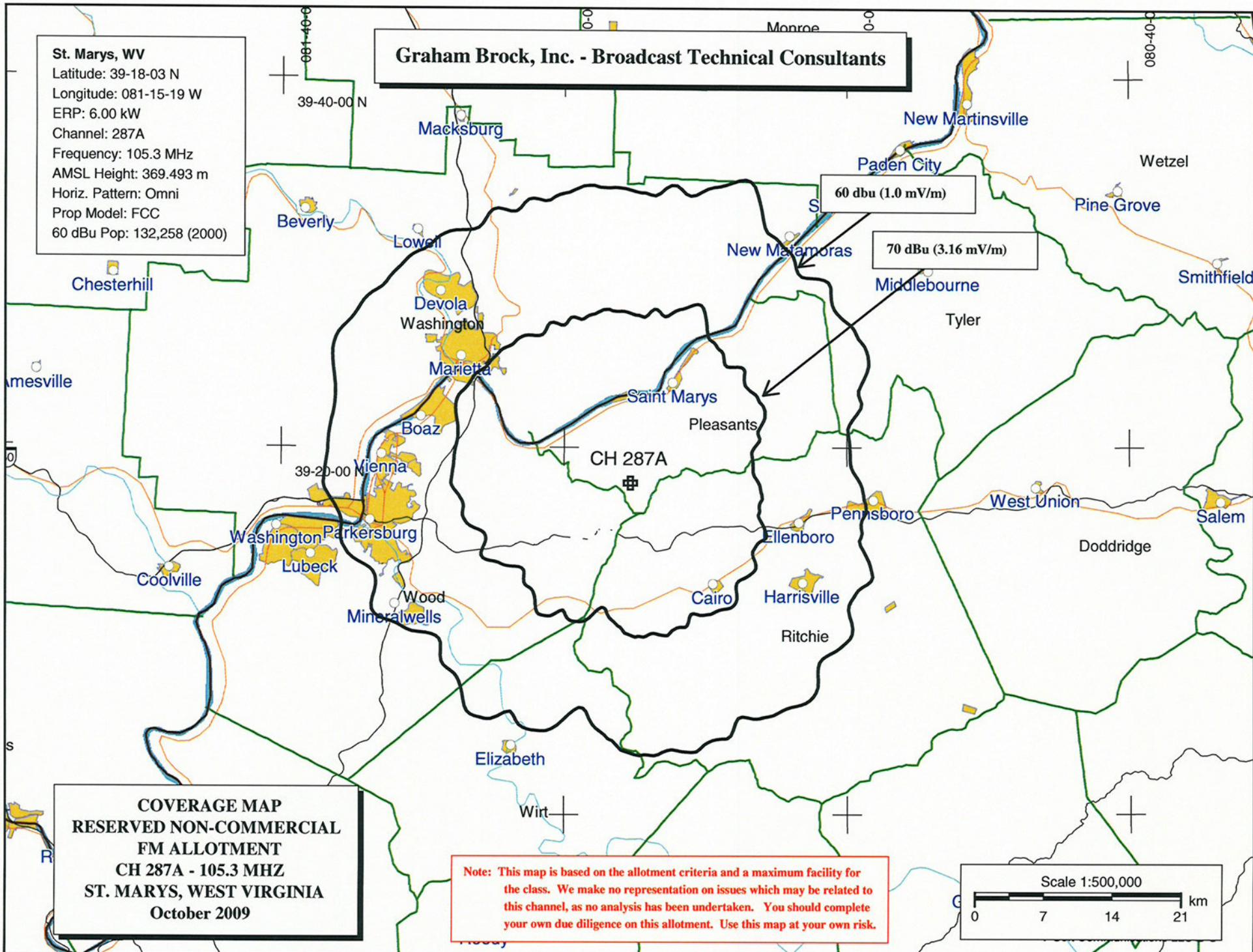


Graham Brock, Inc. - Broadcast Technical Consultants

St. Marys, WV
Latitude: 39-18-03 N
Longitude: 081-15-19 W
ERP: 6.00 kW
Channel: 287A
Frequency: 105.3 MHz
AMSL Height: 369.493 m
Horiz. Pattern: Omni
Prop Model: FCC
60 dBu Pop: 132,258 (2000)



**COVERAGE MAP
RESERVED NON-COMMERCIAL
FM ALLOTMENT
CH 287A - 105.3 MHz
ST. MARYS, WEST VIRGINIA
October 2009**

Note: This map is based on the allotment criteria and a maximum facility for the class. We make no representation on issues which may be related to this channel, as no analysis has been undertaken. You should complete your own due diligence on this allotment. Use this map at your own risk.

