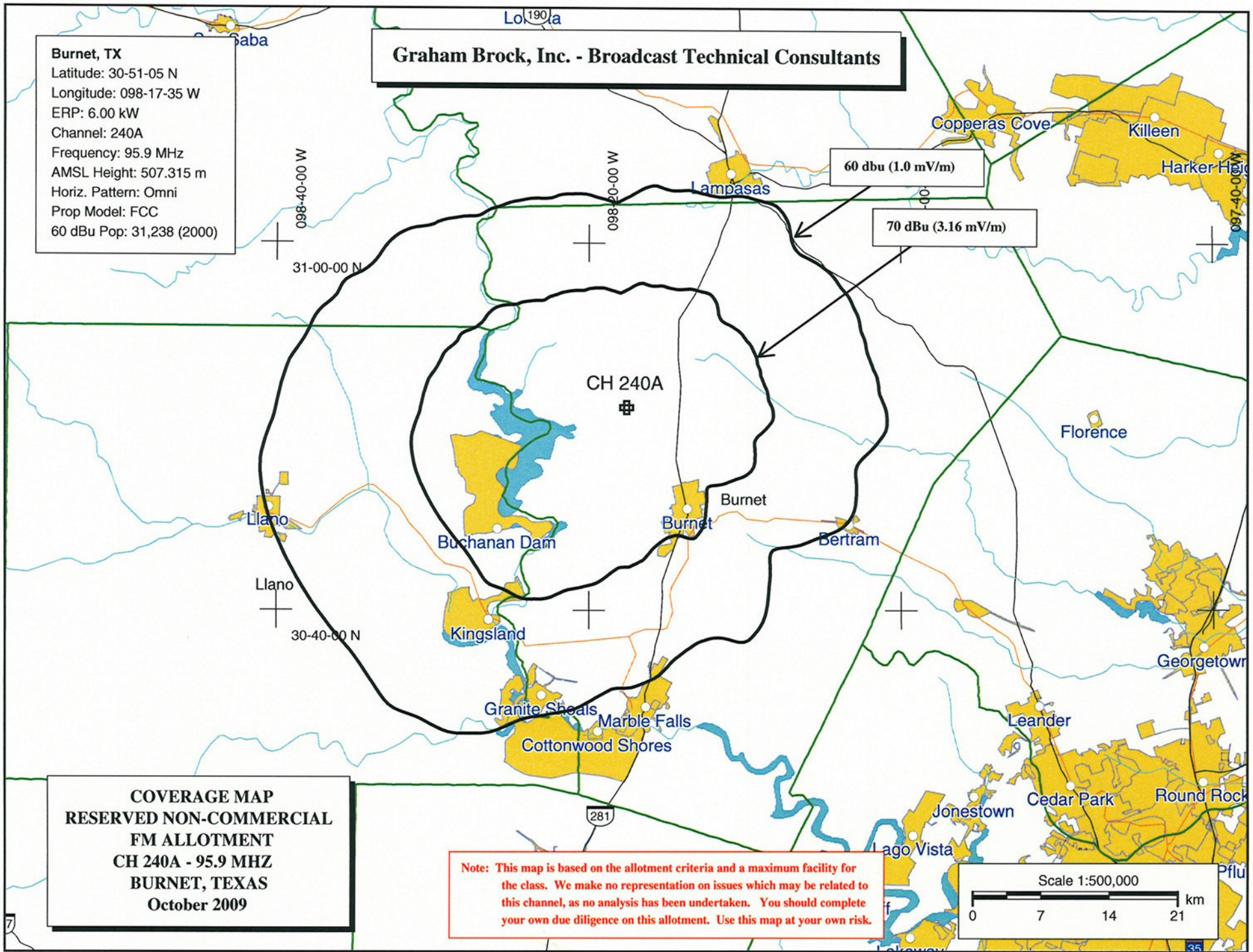


**Graham Brock, Inc. - Broadcast Technical Consultants**

**Burnet, TX**  
Latitude: 30-51-05 N  
Longitude: 098-17-35 W  
ERP: 6.00 kW  
Channel: 240A  
Frequency: 95.9 MHz  
AMSL Height: 507.315 m  
Horiz. Pattern: Omni  
Prop Model: FCC  
60 dBu Pop: 31,238 (2000)



**COVERAGE MAP  
RESERVED NON-COMMERCIAL  
FM ALLOTMENT  
CH 240A - 95.9 MHZ  
BURNET, TEXAS  
October 2009**

**Note:** This map is based on the allotment criteria and a maximum facility for the class. We make no representation on issues which may be related to this channel, as no analysis has been undertaken. You should complete your own due diligence on this allotment. Use this map at your own risk.

